

PROFESSIONAL WATER PUMP & RELEVANT ENGINEERING INTEGRATION

TAIWAN

HUNG SHI PUMP ENTERPRISE CO., LTD.

ADD: No.7, Chenggong 2nd St., Minsyong Township,
Chiayi County 621, Taiwan(R.O.C.)
TEL: 886-5-2200691
FAX: 886-5-2200692
EMAIL: hs.pump@msa.hinet.net
yichang.pump@msa.hinet.net
WEB: www.hspumptw.com

THAILAND

PW ECOTECH CO., LTD.

ADD: 99 Moo 5 Tha Kham, Bang Pakong,
Chachoengsao 24130 Thailand
TEL: 66-38-088190-3
FAX: 66-38-088194
MOBILE: 66-92-3807555
66-92-3808555
EMAIL: pw_ecotech@gmail.com
WEB: www.pw_ecotechpump.com



GENERAL CATALOGUE

WATER PUMPS



CONTENTS

FSBL
FSB
FSM
FNP
FST
FSP
FSH/FSL
FSV
FSPW

HORIZONTAL CENTRIFUGAL
VOLUTE PUMP

HORIZONTAL END SUCTION
CENTRIFUGAL COAXIAL PUMP

DOUBLE SUCTION VOLUTE
PUMP

HORIZONTAL SELF-PRIMING PUMP
(CLOSED TYPE, COUPLE TYPE)

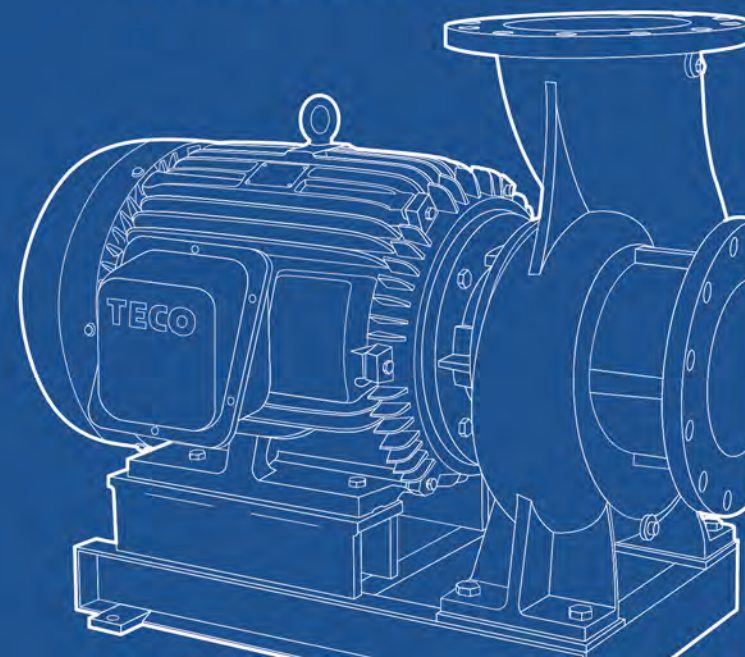
VERTICAL CENTRIFUGAL
PUMP

VERTICAL SEWAGE PUMP

HORIZONTAL MULTI-STAGE
TURBINE PUMP

VERTICAL IN-LINE PUMP
(CLOSED TYPE, COUPLE TYPE)

BLOCKING-FREE PUMPS



ABOUT US

HUNG-SHI PUMP was founded in 1990. The company is located in Minsyong Industrial Park, Chiayi County, Taiwan, and is a professional centrifugal pump manufacturer, committed to the development and production of various industrial use high-performance pump products which are widely used in air conditioning, petrochemical, power, steel, water transport, flood control, electronics, textiles, paper and other industries. Products are marketed all over China, Japan and Southeast Asia, the Philippines, Vietnam, Thailand, Malaysia, Indonesia, Saudi Arabia and many other countries. Not only are we able to provide OEM products for customers, but also provide customized product services. In 2015, a subsidiary, PW ECOTECH was founded in Thailand to provide customers in Southeast Asia with better and more real-time services. In addition, in order to improve the production quality and technology advancement, a subsidiary (Cheng Gang Industrial Co., Ltd.) was founded in Hoa Hu Industrial Park in 2012, responsible for precision machining section of products. With smooth production process and strict control of product quality, the original impeller wood mold casting was improved to lost wax mold casting since 2014, to improve the work process and product efficiency.

FUTURE OUTLOOK

Industrial upgrade, quality upgrade, sustainable operation, the is HUNG-SHI PUMP's sincere and responsible attitude of conscience to customers. At the same time of marching toward internationalization, the Company will continue to serve customers in all fields with customer-oriented services, continue to pursue growth, and sustainable operation.

HUNG-SHI will uphold the concept of "Integrity, Pragmatic and Innovative" to continue striving to implement the customer quality, integrate professional technology, and provide satisfactory customer services, to create a maximized win-win value, and commit to Energy saving and carbon reduction at the same time and coordinate with environment harmoniously with professional technology, to cultivate employees moving forward with the enterprise together in the simultaneous development of social enterprises and co structure harmonious vision.

CERTIFICATE

PRODUCTS



FSBL

HORIZONTAL CENTRIFUGAL
VOLUTE PUMP



Total Head
3-125M



Capacity
0.01-18m³/min



Outlet
25-300mm



BHP
1-250HP



- Air conditioning water
- Tap water supply pressurized
- General industrial water supply
- Firefighting water supply
- Agricultural gardening irrigation water
- Hot water Supply
- For chemical plant use

PRODUCTS

FSB

HORIZONTAL END SUCTION
CENTRIFUGAL COAXIAL PUMP



Total Head
20-85M



Capacity
0.01-13m³/min



Outlet
25-300mm



BHP
1-100HP



Air conditioning water supply

High rise building water supply

Firefighting water supply

Sewage treatment equipment

Boiler water supply

Agricultural gardening irrigation water

General industrial water supply

Civil construction water

FSM

DOUBLE SUCTION VOLUTE
PUMP



Total Head
5-100M



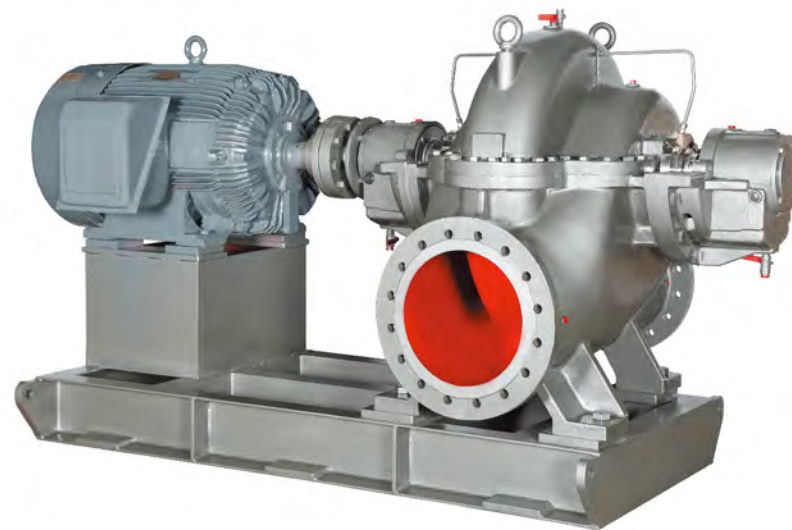
Capacity
2.5-50m³/min



Outlet
125-500mm



BHP
25-500HP



For agriculture use

For water supply system use

Industrial circulating water system

Construction site drainage

Air conditioning water

FNP

HORIZONTAL SELF-PRIMING PUMP
(CLOSED TYPE, COUPLE TYPE)



Total Head
5-50M



Capacity
0.08-6m³/min



Outlet
40-200mm



BHP
1-100HP



For chemical plant use

Liquid fuel delivery

General industrial water supply

For sewage drainage use

For irrigation use

Bucket truck, street sprinkler water supply

Food industry transport

For wastewater drainage use

PRODUCTS

FST

VERTICAL CENTRIFUGAL PUMP



Total Head
3-120M



Capacity
0.04-240m³/min



Outlet
80-1200mm



BHP
1-500HP



Air conditioning water

Raw water, sea water pumping

Flood prevention (For pumping station use)

Agricultural gardening deep well pumping for irrigation use

All types of water supply for general factory business unit use

Firefighting pressurized industrial water, Tap water delivery pressurized

FSP

VERTICAL SEWAGE PUMP



Total Head
3-50M



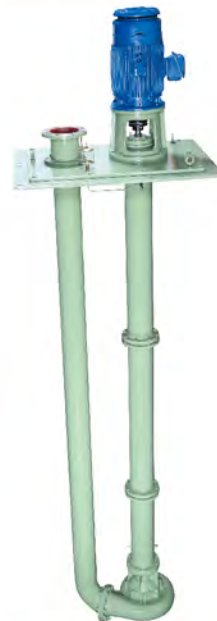
Capacity
0.05-10m³/min



Outlet
25-250mm



BHP
1-100HP



Slurry water, clear water, sticky, corrosive solution pumping

High temperature dangerous liquid pumping

Poisonous liquid pumping

FSH/FSL

HORIZONTAL MULTI-STAGE
TURBINE PUMP



Total Head
20-500M



Capacity
0.04-3.8m³/min



Outlet
40-150mm



BHP
3-200HP



FSH



FSL

Boiler water supply

High rise building water supply

General assembly line cooling water

Civil engineering water

Irrigation, tunnel drainage

Tap water supply

PRODUCTS

NOTE

FSV

VERTICAL IN-LINE PUMP
(CLOSED TYPE, COUPLE TYPE)



Total Head
10-35M



Capacity
0.1-2.5m³/min



Outlet
32-150mm



BHP
1/2-50HP

General industrial water supply pumping

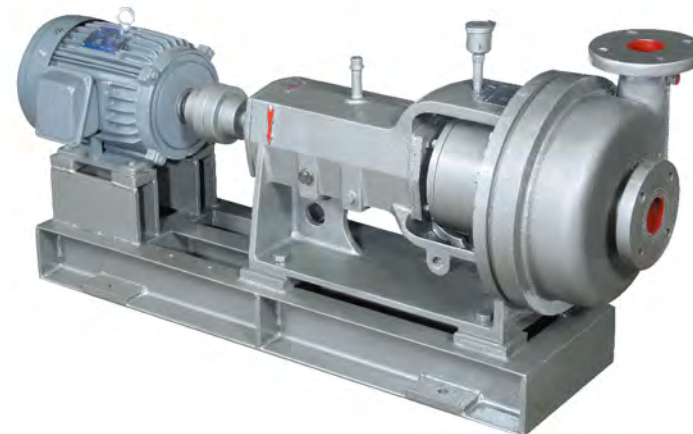
All models of air conditioning system

Circulating water pumping

For chemical plant use

FSPW

BLOCKING-FREE PUMPS



Total Head
4-43M



Capacity
0.05-10m³/min



Outlet
50-150mm



BHP
2-175HP

General industrial water supply

Sewage treatment equipment

Pulp, mud transport

Wastewater treatment

SUBJECT

DATE

When making an enquiry, please indicate the details of the following information:

1. **Liquid** : _____
2. **Capacity** : _____ M³/Min.(US.GPM)
3. **Total head** : _____ M(ft)
4. **Temperature of Liquid** : _____ °C(°F)
5. **Viscosity of Liquid** : _____
6. **Specific Gravity** : _____
7. **PH** : _____
8. **Vapor pressure at operating temperature** : _____ kg/cm²(PSIA)
9. **NPSH available** : _____ M(ft)
10. **Pump speed** : _____ rpm
11. **Rated Power** : _____ KW(HP) _____ Pole _____ Phase, _____ Hz, _____ volts

